

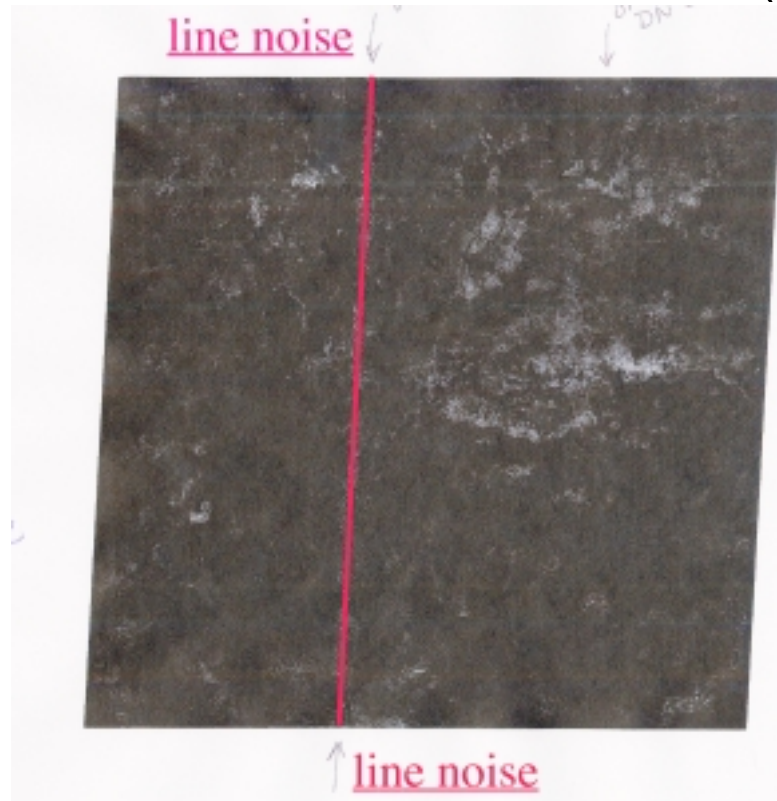
3. Major Issues

- Vertical Line Error in SWIR
- Four Corners Information
- Scale-out in L1B
- Zone Boundary in Atmospherically Corrected Data
- Cross Talk Issue in SWIR=> Correction Process is incorporated in Decorrelation Stretch Data and Atmospherically Corrected Data
- Accuracy in Temperature Data

Major Troubles and their Countermeasures (1)

Vertical Line Error in SWIR

- Errors Caused by scratch in SWIR filter
- Mismatching with Radiometric Database (TBC)

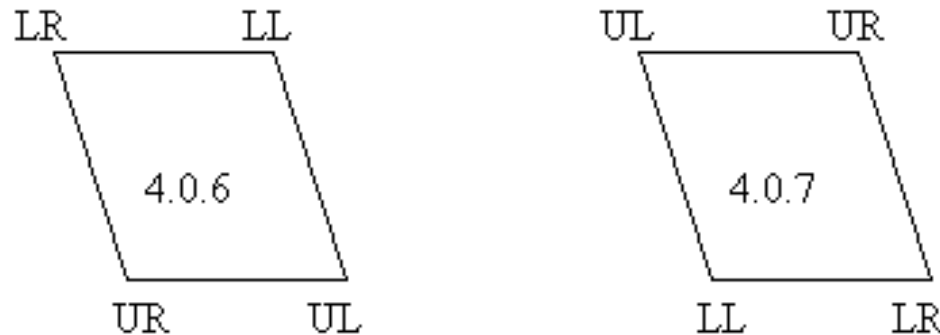


Major Troubles and their Countermeasures (2)

(1/3)

Four Corners Information

- ❑ Modification was made to correct inversed latitudes and longitudes of the four corners indicated in metadata of **ascending observation L1B images**.



- ❑ L1B products generated before this modification had incorrect values for the Upper Left, Upper Right, Lower Left and Lower Right longitudes and latitudes of the Scene Four Corners information given in the Metadata. The values had been 180 degrees inversed. All products generated after **September 19th, 2002, with 04.00R07**, have correct values. If you wish to replace your product(s) generated before the update, please contact ASTER GDS User Service.

Major Troubles and their Countermeasures (2)

(2/3)

Four Corners Information

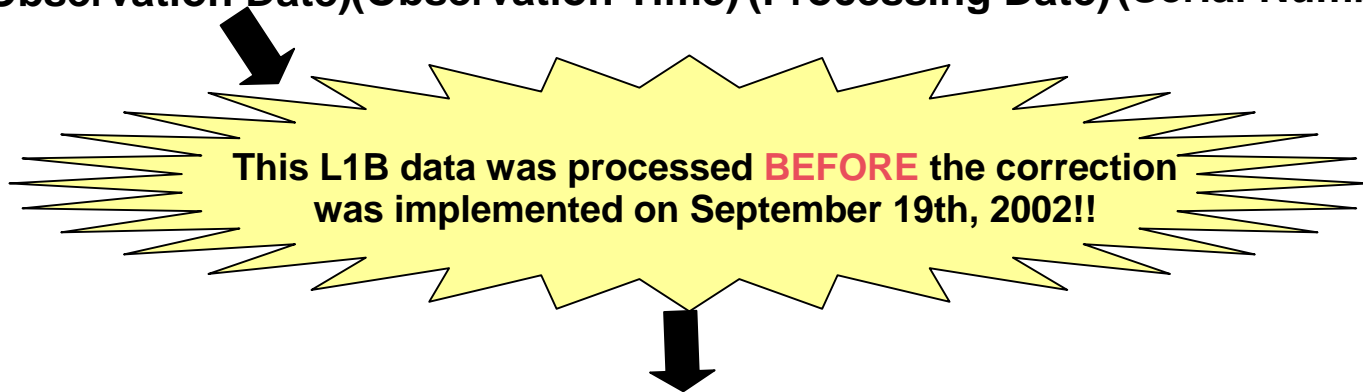
How to identify if your product contains this problem

You can identify the product generation date of your data from its granule ID!!

<Example>

Granule ID #ASTL1B0103190215190103290064

March 19th, 2001 02:15:19 March 29th, 2001 64th scene
(Observation Date)(Observation Time) (Processing Date) (Serial Number)



If it is **ascending observation data**, the four corners information is inverted.

Major Troubles and their Countermeasures (4)

Apparent Zone Boundary in Atmospherically Corrected data,
especially in Band 2

