



Optech

DASHMap

Tel: [905] 660-0808

Web: www.optech.ca

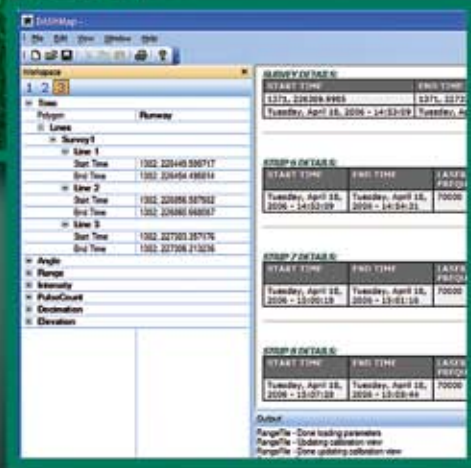
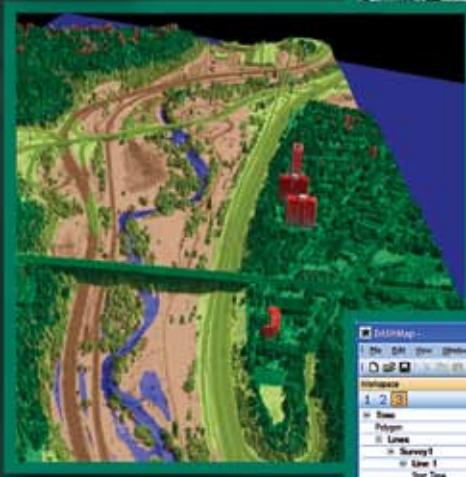
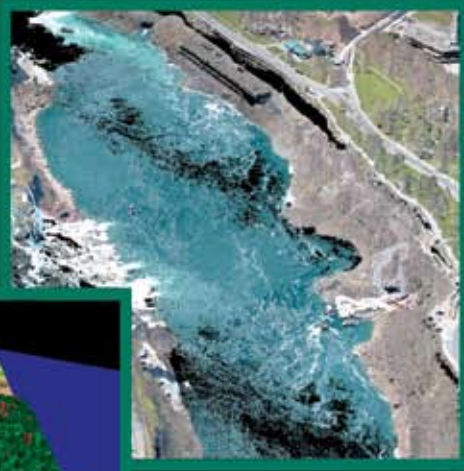
Email: inquiries@optech.ca

Optech

IT'S ALL ABOUT THE SCIENCE

DASHMap

Digital Aerial Surveying Hub



What it does: Process entire ALTM survey missions quickly, simply and with a streamlined user interface.

Why it's useful: Now you can direct the most accurate laser point processing capabilities in the industry from a single panel.

DASHMap gives you:

- Simplified user interface with only one window – compact and easy to learn
- Amazingly fast processing times
- API for access to raw data – import DASHMap data directly into your proprietary applications
- More output formats – easy import into many post-processing software programs
- Optimization for multi-core computers – accelerates processing times
- More coordinate systems – for enhanced global coverage
- Fewer intermediate files – reduces the disk space required for processing
- Geoid and coordinate transformations – reduces processing times. Let DASHMap do it for you!
- 3D graphics viewer – no more third-party data packages. Points are color-coded for elevation or intensity, or both – it's your choice!
- Built-in digitizer post-processing software – the only program with this capability

IT'S ALL ABOUT THE SCIENCE